

2023 IMPACT ASSESSMENT REPORT

Table of Contents

- 01** OVERVIEW
- 02** IMPACT INDICATORS
- 03** RINCY ROYAL MONTESSORI SCHOOL
- 04** ABETIFI D/A SCHOOL
- 05** STREET CHILD EMPOWERMENT FOUNDATION
- 06** NYAME DUA ORPHANAGE
- 07** ABLEKUMA CENTRAL STEM TRAINING
- 08** ACCRA TRAINING DEMONSTRATION SCHOOL

Overview

This report covers the first three quarters of 2023 and highlights TECHAiDE's increased engagement with teachers, students, and leaders in the education sector in Ghana. We have made significant improvements in educational outcomes and experiences for learners and teachers, especially in STEM education. Our efforts this year have so far positively impacted **6,698 learners and 190 teachers**.

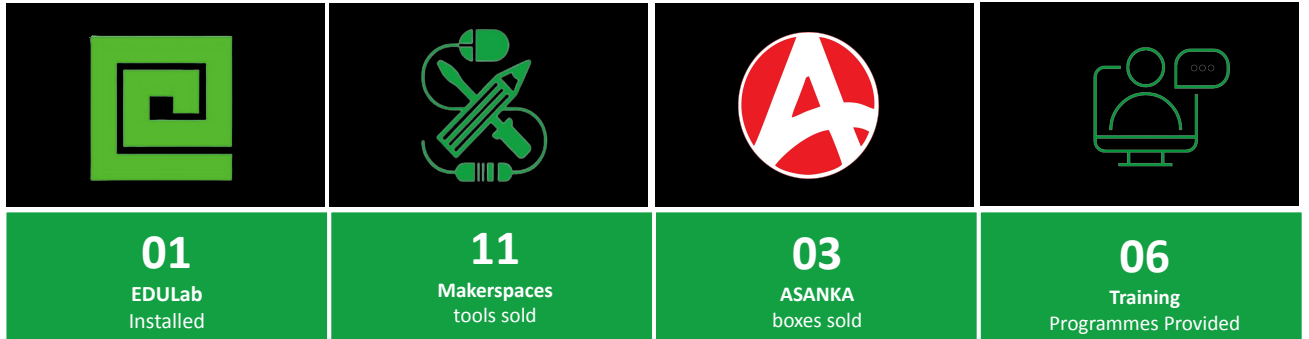
Furthermore, we have expanded our reach in STEM education to more than double in relation to the Annual Impact report for 2022. This includes training **65 Public Basic School Teachers** in **28 Public Basic Schools**. This represents an increase in our support for the public educational sector.

Additionally, we have successfully supported **109** girls in STEM education and empowered them to take charge of their well-being, learning, and career plans.

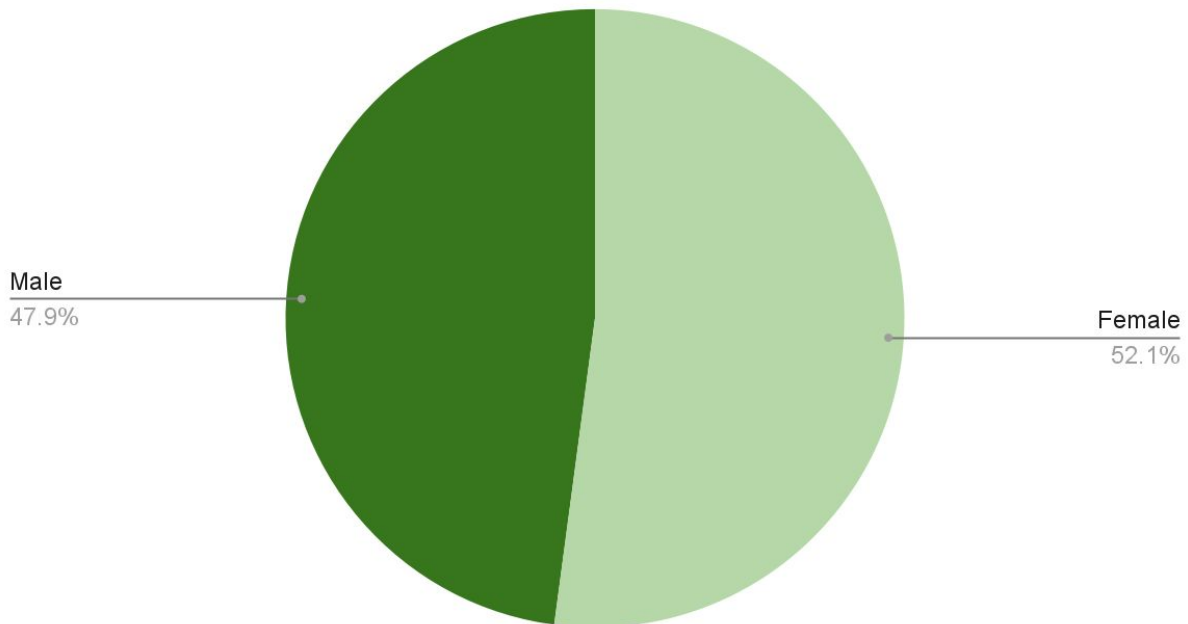
Based on the demographics of the areas where TECHAiDE operated during the review period, it is evident that our Impact on promoting STEM education has increased in comparison to the 2021/2022 impact report.

Overview

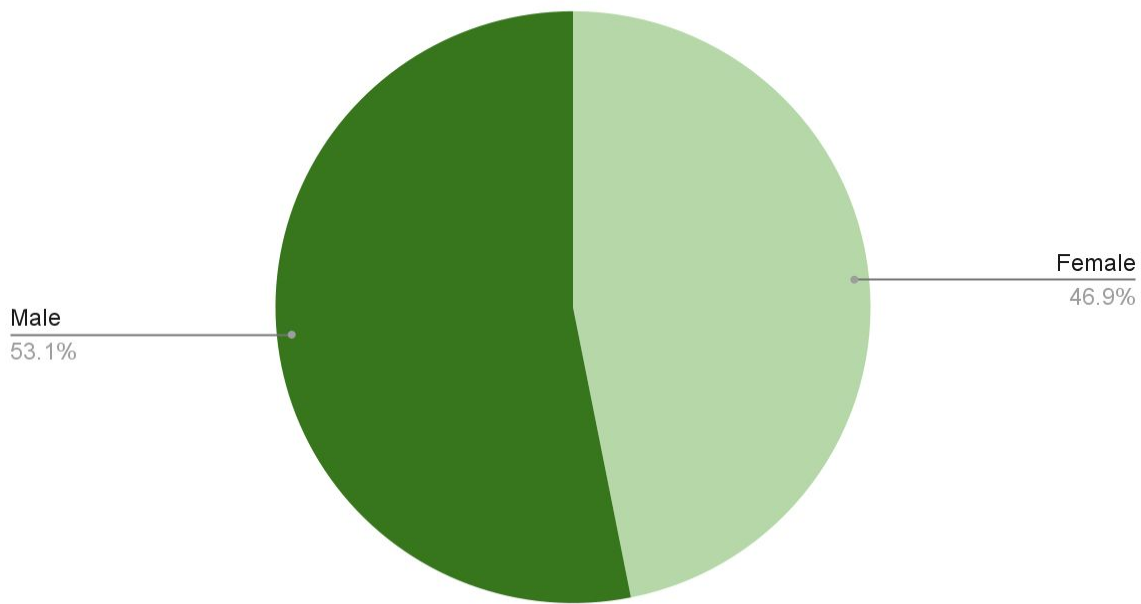
Total number of products and services for the year



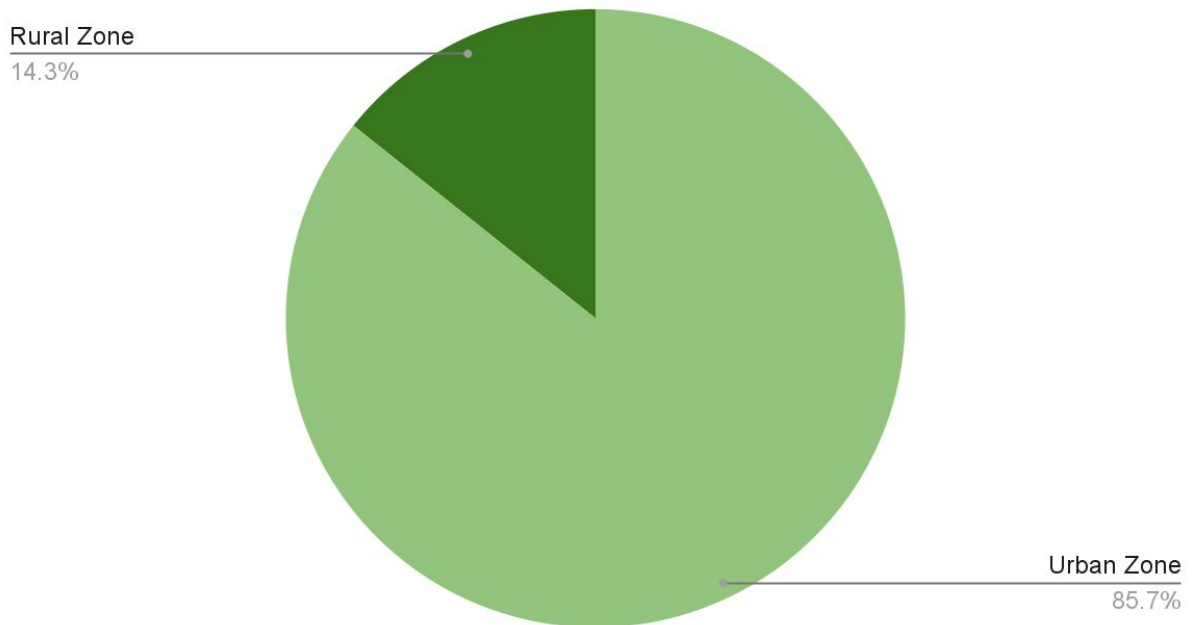
Number of 190 Teacher Trained.



6,698 Learners Impacted



Project Locations = 6



Impact Indicators

Educational Indicator	Data	2022	2023
Average Student Test Score (P19024) BECE (1 Highest - 9 lower)	BECE Test / WASSCE Test scores are gathered pre-installation and then post-installation of the equipment	55-60 per cent Grade C+, classified as 5, and described as Average.	Awaiting the BECE results
School Enrolment: Female (PI1081)	January Admission numbers are requested from Headmaster	10,005	3,810
School Enrolment: Total (PI2389)	January Admission numbers are requested from Headmaster	14,568	6,698
Student Tests Pass Rate (PI8372) (# Pass/Total Enrollment)	We use the already gathered BECE/WASSE pre-post numbers to calculate this	14%	Awaiting the BECE results
Educational Resource to Student Ratio (PI4279) (# Students : # Seats)	We take the # of EDULab stations and divide by the School Enrollment total for January	7.5:1	5.2:1
Average Teaching Experience (PI7871) (# Yrs Experience/# of Teachers)	We have them tell us when they sign in for TECHAiDE training	Did not gather teacher experience this year	3 years
School Enrolment: Urban (PI8069)	We define location using statista website	6,111	6,283
School Enrolment: Rural (PI6569)	We define location using statista website	10,055	415
School Enrolment: Peri-urban (PI3337)	We define location using statista website	4,000	0

For every installation or service TECHAiDE, takes baseline data. This becomes a reference point for which to measure the Impact of TECHAiDE products and services.

Rincy Royal Montessori School

The students and teachers of Rincy Royal School were empowered on how to use Arduino Kits to improve teaching and learning outcomes in STEM education. The total number of teachers who participated in the training and the impact it had on students is summarized below

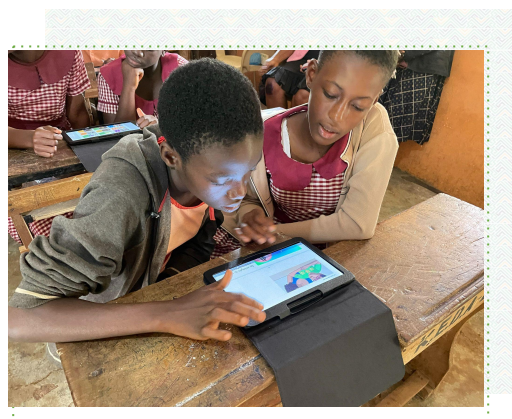
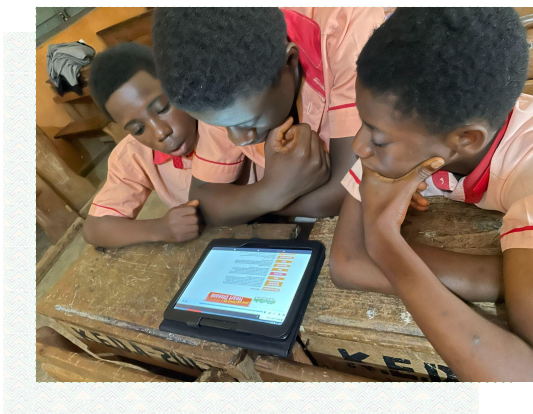
Teachers Trained		Impact on Students	
Men	Women	Boys	Girls
15	13	231	321
Total 28		Total 552	



Abetifi D/A School

In collaboration with the Data Bank Foundation TECHAiDE deployed an ASANKA and sets of tablets to train the teachers and students of Abetifi Primary and JHS Teachers. This gesture was in line with the Data Bank Foundation's Corporate Social Responsibility (CSR) to enhance teaching and learning in Abetifi D/A Primary- JHS. The total number of teachers who participated with their gender breakdown is in the table below.

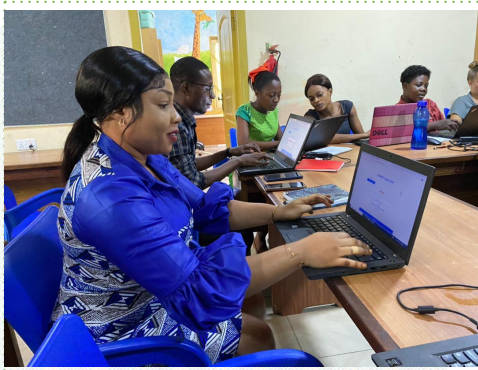
Teachers Trained		Impact on Students	
Men	Women	Boys	Girls
13	11	128	287
Total 24		Total 415	



Street Child Empowerment Fdn

TECHAiDE in collaboration with Street Children Empowerment Foundation set up an ASANKA in their Learning Empowerment Centre at Jamestown which is managed by 9 teachers and serves 9 schools and 990 students in the community. The breakdown is in the table below.

Teachers Trained		Impact on Students	
Men	Women	Boys	Girls
5	4	489	501
Total 9		Total 990	



Nyame Dua Orphanage

Courtesy Implementers, the Nyame Dua Orphanage was equipped with a 2-seater EDULab Premium and an ASANKA to help improve the digital skills and academic performance of children in the home. Below is the impact the training had.

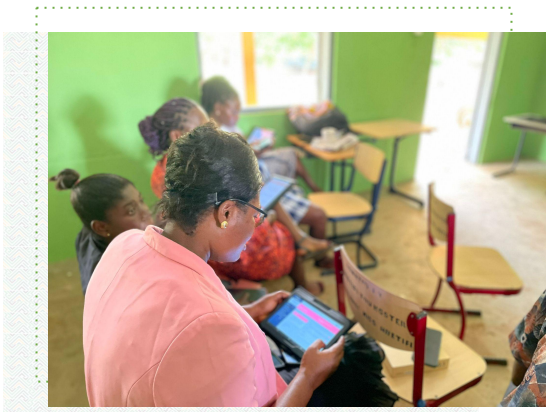
Teachers Trained		Impact on Students	
Men	Women	Boys	Girls
5	0	17	29
Total 5		Total 46	



Ablekuma Central STEM Training

As part of our effort to impact STEM education, TECHAiDE trained teachers from Ablekuma Central at Mataheko Central University Old campus in Accra. The training gave Science, Mathematics, IT, and other subject teachers within the municipality the requisite skills in STEM and robotics. Participants were given training on Arduino, LEGO Spike, Ozobot, 3D printing, and Virtual Reality (VR) to help them effectively teach STEM subjects and promote better learning outcomes using the [Makerspace GES Blended Curriculum - Ghana](#). Below are the participants' demographics.

Teachers Trained		Impact on Students	
Men	Women	Boys	Girls
33	27	1526	2149
Total 60		Total 3,675	

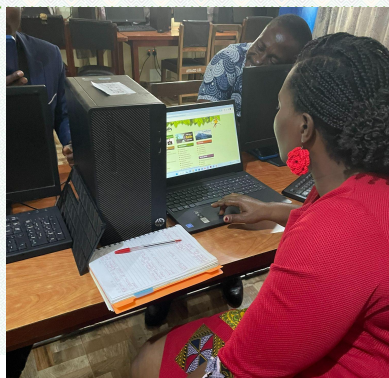


Accra Training Demonstration Sch

TECHAiDE and UNESCO jointly conducted a three-month pilot project at Accra College of Education School. The project aims to address the obstacles of online learning in Ghana, particularly in areas with limited internet connectivity, high costs, and accessibility challenges. Through the use of ASANKA, the project seeks to provide students at Accra College of Education School with offline access to educational resources, potentially transforming remote education and fostering inclusivity in learning.

TECHAiDE conducted training at Accra College of Education Demonstration School, at Madina-Estate. This is an ASANKA Pilot Project in collaboration with UNESCO Ghana to give the teachers the prerequisite knowledge on how to use the ASANKA device to enhance teaching and learning. The total number of teachers in the school is **64**, with **27** men and **37** women.

Teachers Trained		Impact on Students	
Men	Women	Boys	Girls
27	37	497	523
Total 64		Total 1,020	



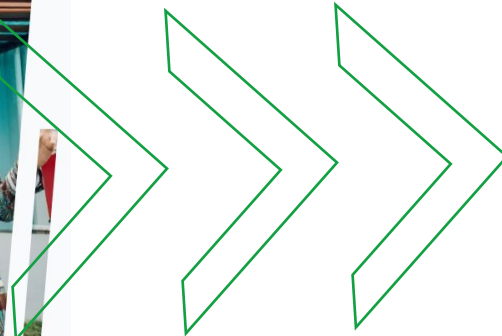
Brief Profile of TECHAiDE

TECHAiDE uses a needs-based approach to develop solutions that focus on lowering the total cost of ownership with improved sustainability.

TECHAiDE has been working in Africa since 2011 using ICTs to improve Education, support Youth Development, and facilitate Health Delivery.

In collaboration with our international development partners in Africa, Europe, and America, we have provided appropriate technologies and developed human capacities that unleashed the potential of individuals, communities, and institutions. TECHAiDE uses a needs-based approach to develop solutions that focus on lowering the total cost of ownership with improved sustainability.

TECHAiDE was founded by Kafui A. Prebbie – a technology entrepreneur and educationist with a long history of activism in ICTs for Development internationally, in the quest to partner with highly skilled and passionate professionals of integrity, to affect lives and make the world a better place.



Thank You

If you have any questions or would like to schedule a meeting, please email or call us:

Contact

TECHAiDE

1 Cardinal LN
Accra Ghana
GA-535-7244

www.techaide.global
Admin@techaide.global

+233 303 976 600
+233 265 733 200